

# RANGE 15A

## SOP

### **RANGE DESCRIPTION**

- Range 15A is an active live fire and maneuver range located at Grid 79207115.
- This range is accessible from MCB-3 and MCB-6.
- Max Target Distance: 400m.

**Primary Use:** Multipurpose small arms range for platoon sized units in the offensive conducting Fire and Maneuver or Fire and Movement, buddy pair, and squad rushes engaging targets to the direct front.

- There are multiple firing points/lanes on Range 15A with placement of Portable Infantry Targets (PITs), paper, steel reactive targets (SRTs), and Trackless Mobile Infantry Targets (TMITs) available.
- There are (7) distinct "Operating Boxes" (Op-Box) for the TMITs available to augment the Unit Scheme of Maneuver. Op-Boxes 1 and 5 offer the ability to Crossfire. See Figures 5 and 7. Crossfire is only authorized on the TMITs in their designated Op-Boxes. Unless otherwise noted, Crossfire anywhere else on Range 15A is prohibited.

**Alternate Uses:** Multipurpose Machine Gun Range and static live-fire range with limited rocket and mortar capability.

### **NOTES:**

- OIC/RSO may need the key to the MCB-3F gate to access this range if MCB-6 is closed due to conflicts.
- OIC/RSO may be issued the key to the MCB-6D and MCB3-F gates for use as an Entry Control Point (ECP).
- OIC/RSO will ensure the MCB-6D and MCB-3F are closed and manned at all times and never closed and locked. Normal traffic will be allowed to flow when it does not conflict with the training.
- Gates will be opened for medevac and RMB personnel and Contractors will never be prevented access.
- Targets must be placed in accordance with this SOP. Any modifications from this SOP must be approved in advance by the Installation Range Safety Officer (IRSO).
- Use of the Trackless Mobile Infantry Targets (TMITS) is authorized on this range with restrictions.
- Simultaneous use of Range 15 with Range 15A will require a Single OIC but a separate RSO on each range.

**Conflicts:** Check the Range Facility Management Support System (RFMSS) for applicability and details.

- Range 10, Range 10A, Range 11, Range 16, and certain live fire events from the MOUT Facility conflict with access to this range. When these ranges are scheduled, MCB-6 will be closed and the key to the MCB-6D gate will not be issued. If previously issued, the key to the MCB-6D gate will be surrendered upon request.
- Range 15 conflicts with this range and will close access via MCB-3.
- Range 15 live fire often closes Range 15A for maneuver/movement entirely.
- Range 8 and Range 8A conflict with movement into the tree line when certain events are scheduled.
- Range 9 live fire closes Range 15A entirely.
- Range 15A closes MCB-3 and access to the range is limited via MCB-6 or MCB-1 to MCB-8 to Tokyo Rd to the Northern most point of MCB-3 then south to the MCB-3F gate if MCB-6 is closed.
- Use of M855A1 or M80A1 EPR ammunition for Fire and Movement or Fire and Maneuver is prohibited.
- Placing targets on the west side of MCB-3 inside the dud impact area of Range 15 beyond the barb wire is prohibited. Steel targets in this area are authorized for engagement by the maneuver elements.
- Targets may be placed on MCB-3 or between the road surface and the barbwire fence but must not completely block MCB-3 for Medevac Purposes.

## PRINCIPAL DIRECTIONS OF FIRE, MANEUVER BOXES, AND SUPPORT BY FIRE POSITIONS



**MANEUVER BOXES:** (All azimuths are in Grid North)

A: Principal Direction of Movement/Fire: Left Gun Target Line- 192.13° / Right Gun Target Line- 206.81°

B: Start Fire Line: Left Grid- 18STH7950371147 / Right Grid- 18STH7934971193 —

C: Stop Fire Line: Left Grid- 18STH7943670837 / Right Grid- 18STH7925871012 —

D: Support By Fire Position-2: Left Grid- 18STH7927971205 at 144.79° / Right Grid- 18STH7921571173 at 174.45° —

E: Support By Fire Position-1: Left Grid- 18STH7917071165 at 123.26° / Right Grid- 18STH7914171144 at 148.63° —

F: Secondary Direction of Movement/Fire: Left Gun Target Line- 129.69° / Right Gun Target Line- 130.15°

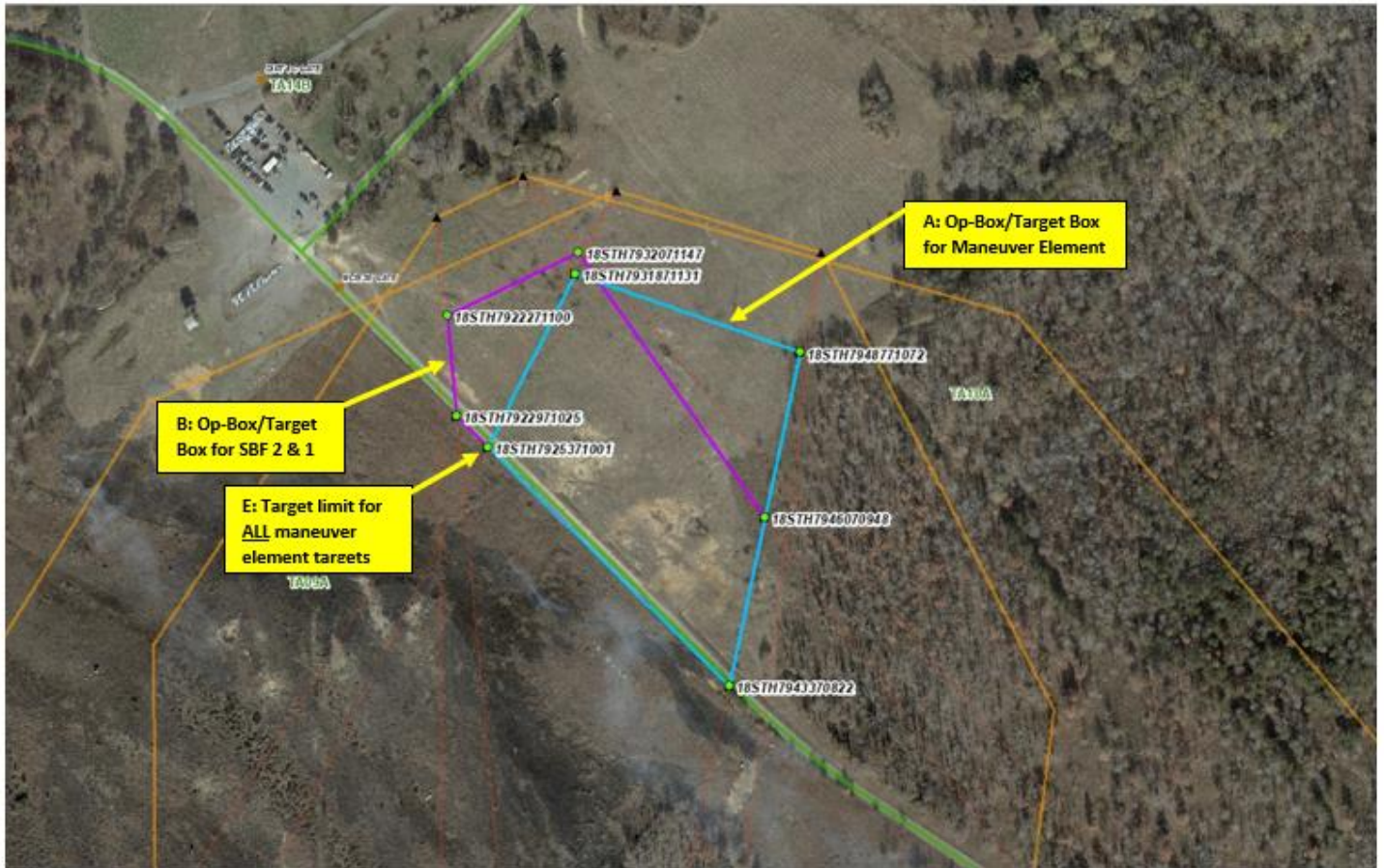
G: Start Fire Line: Left Grid- 18STH7923471266 / Right Grid- 18STH7913471154 —

H: Stop Fire Line: Left Grid- 18STH7990270712 / Right Grid- 18STH7983770561 —

NOTE: ALL TARGETS MUST BE PLACED IN ACCORDANCE WITH FIGURE-2, TMIT OP-BOXES, AND FIRED TO THE DIRECT FRONT ONLY. CROSSFIRE IS NOT AUTHORIZED DURING FIRE AND MANEUVER UNLESS OTHERWISE INDICATED BELOW.

**Figure-1**

**TMIT OP-BOXES/TARGET BOXES FOR PRINCIPAL MANEUVER BOX & SUPPORT BY FIRE POSITIONS 2 & 1**



A: Op-Box/Target box in **Blue** will support static, PIT, and TMIT Targets for the Principal Maneuver Box.

B: Op-Box/Target box in **Purple** will support static, PIT, and TMIT Targets for SBF 2 and 1 if needed.

C: **Crossfire is not authorized.** All firing is to the direct front only, and TMITS must egress to maintain 69m.

D: Neutralized TMITs must exit the battle space in the most direct manner to avoid secondary ricochet hazard.

E: Maneuver Element: No target will be placed or engaged north of **18STH7925371001** grid above and will be used as the left lateral limit of fire.

F: PITS and TMIT Targets are authorized to be placed or operate on MCB-3 but must not block the road entirely.

G: PITS and TMIT Targets are authorized to be placed on the west side off MCB-3 but entry into the dud impact area marked by the barbed wire fence is prohibited for all personnel and targets.

H: For all TMIT scenarios to include "Counterattack", the stand-off distances noted in paragraph (E) of this SOP must be adhered to at all times to include laterally from the target to other personnel.

I: Static, PITS, and TMIT targets may be engaged from SBF-1 or be placed as shown in Figure-6.

**Figure-2**

### 60mm MORTAR POSITIONS AND TARGET BOXES

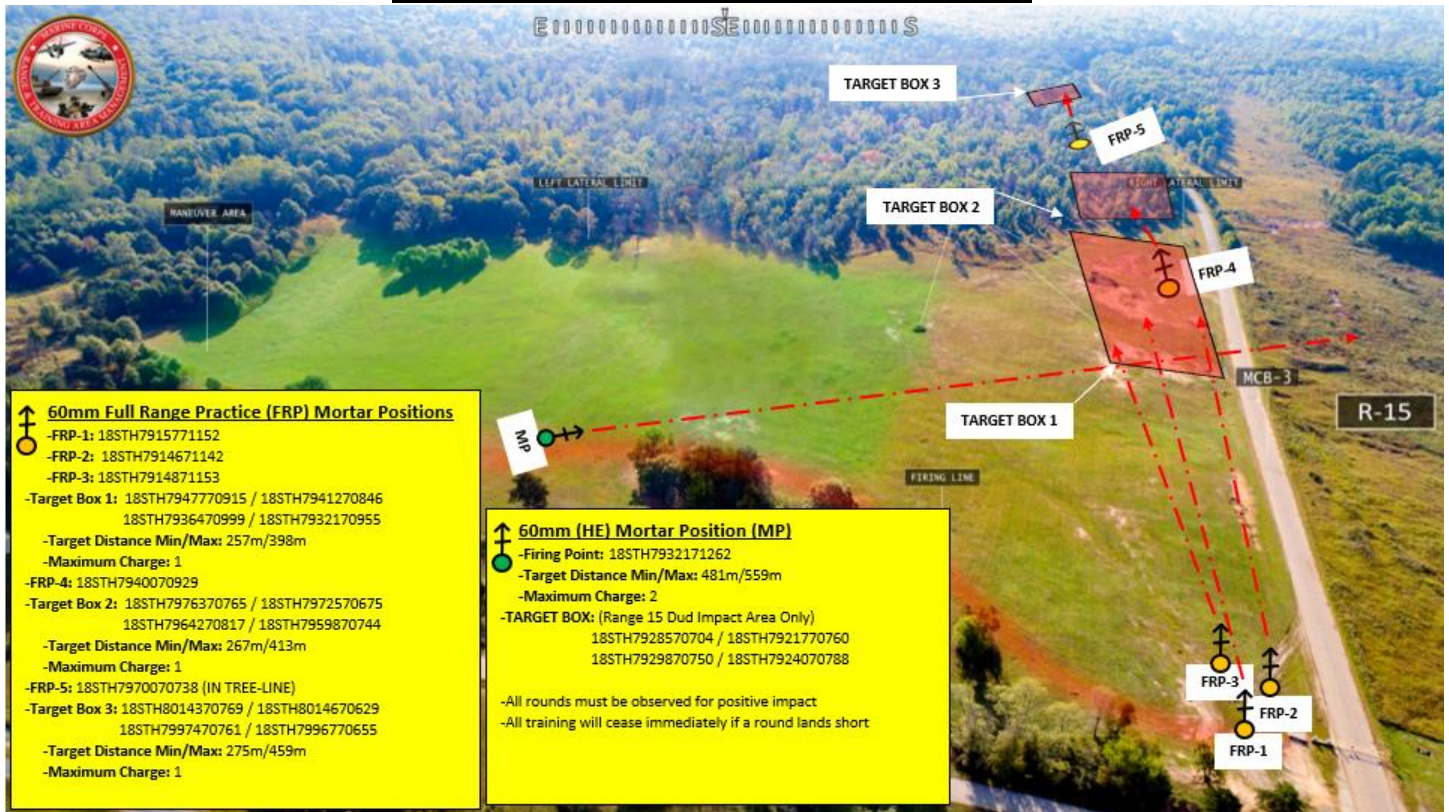


Figure-3

### ROCKET FIRING POSITIONS AND TARGET BOXES



Figure-4



## TMIT OPERATING BOXES (OP-BOX) 4 & 5



Figure-7

### Placement of SRTs around PITs

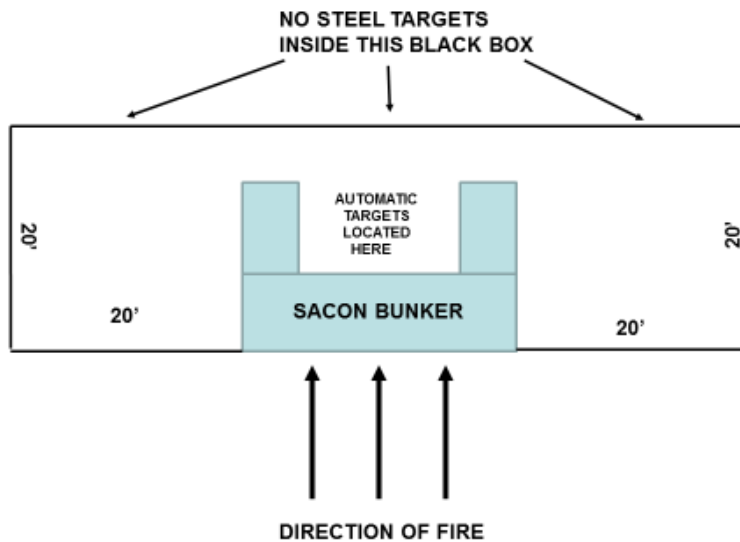


Figure-8

**A. WEAPONS ACCOMMODATED:** Detailed list is maintained in the Range Facility Management Support System (RFMSS).

- Service Rifles
- Service Pistols
- Shotguns
- Light and Medium Machine Guns
- Approved Foreign Weapons
- Hand held grenade launchers (Smoke, Illum, and Practice only)
- Hand Grenades (Smoke, Illum, and Practice only)
- LAW (Trainer only)
- SMAW (with restrictions)
- MAAWS (with restrictions)
- AT-4 (with restrictions)
- 60mm Mortar (with restrictions)
- Laser (Class 3R and lower)

**B. AMMUNITION AUTHORIZED:** Detailed list is maintained in the Range Facility Management Support System (RFMSS).

- 5.56mm (All except M855A1 and M80A1 these DODICS are approved for Static Fire Only)
- 7.62mm Special Ball/Ball/Linked
- Pistol (All)
- Shotgun (All)
- 40mm (Smoke, Illum, and Practice)
- M72 LAW (21mm Trainer)
- SMAW (83mm Inert and 9mm spotter round)
- SMAW (HX05) with restrictions see Figure (3)
- MAAWS (84mm Inert and 9mm spotter round)
- MAAWS (CA21/CA27) with restrictions see Figure (3)
- AT-4 (84mm Inert and 9mm spotter round)
- 60mm Mortar Full Range Practice with restrictions see Figure (2)
- 60mm Mortar (HE and Illum) with restrictions see Figure (2)
- Hand Grenades (Smoke, Illum, and Practice)
- Approved Foreign Ammunition

**C. LASERS AUTHORIZED:** Class 1 – 3R. Standard aiming devices mounted on approved weapons. Class 3B can be fired if safety filter is on, reducing power output.

**D. TARGETS/SIMULATORS/DEVICES:**

- This range is supportable with Portable Infantry Targets (PITs), paper, Steel Reactive Targets (SRTs), or Trackless Mobile Infantry Targets (TMITs) that must be requested for use under “**R-15A Support Services**” in the Training Systems Support Desk (TSSD) when the range is requested in RFMSS.
- Trackless Mobile Infantry Targets (TMITs) are approved on this range and must be coordinated through the TSSD.
- TMITs have (7) distinct “Operating Boxes” (Op-box) and will only operate in the areas depicted in Figures 2, 5, 6, and 7.
- TMITs are associated to specific events in RFMSS:

- Op-Boxes in Figure-2 are associated to “LIVE FIRE AND MANEUVER ROBOTS 5.56/5.56 SBF AND BELOW”.
- Op-Box 1 is associated with the “STATIC LIVE FIRE ROBOTS 7.62 (or 7.62SB or 5.56) AND BELOW”.
- Op-Boxes 2, 3, 4, and 5 are associated with the “LIVE FIRE ROBOTS MANEUVER 5.56/7.62 SBF AND BELOW”.
- Additional targets are limited to paper, wood, plastic and approved ballistic steel reactive targets (SRT).
- OIC/RSO must ensure all additional targets are placed and engaged to the direct front of the shooter so that all gun-target lines stay within lateral limit markers of this range.
- Crossfire is not authorized from anywhere in the maneuver box except as noted for the TMITs in Op-Boxes 1 and 5 in Figures 5 and 7.
- Steel reactive targets (SRTs) must be a minimum of 3/8” and constructed of AR-500 or greater steel.
- SRTs will not be placed within 20’ to the side or 20’ behind any PITs used as shown in Figure-8.
- EPR ammunition (M855A1/M80A1) is **NOT** authorized fire and maneuver or to be fired on SRTs, TMITs, or steel protective plates for PITs.
- Contact Training Support Center (TSC) at (703)432-7026/7969 for target support or questions.

**E. Minimum engagement distances for SRT and TMITs:**

- Pistol: 7 meters
- Shotgun (bird/buck): 10 meters
- Shotgun (slug): 45 meters
- 5.56mm (soft-core): 23 meters
- 5.56mm (steel penetrator): 69 meters
- 5.45mm: 69 meters
- 7.62mm Ball/linked: 150 meters
- 7.62mm Special Ball: 150 meters
- 7.62x39mm/7.62x54mm: 150 meters
- .300 Win Mag/Norma Mag: 375 meters
- .338 Lapua Mag/Norma Mag: 375 meters

**F. PRIMARY DIRECTION OF FIRE. South/Southeast to Southwest**

**G. RANGE USE SPECIAL INSTRUCTIONS:**

1. The only weapons and ammunition approved for use on this range are listed in this document and RFMSS. There shall be no deviations from or modification to the approved weapons and ammunition.
2. Any new or non-standard training events that deviate from the established range certification and this SOP will require a minimum of 60 days to approve.
3. The Officer-in-Charge (OIC) shall be the rank of Staff Sergeant (E-6) or above and the Range Safety Officer (RSO) shall be the rank of Sergeant (E-5) or above and both will be qualified in accordance with MCB Range Regulations, have no other duties assigned, and are not permitted to participate in any live fire.
4. For Company sized or smaller events, the OIC must be the rank of Gunnery Sergeant (E-7) or above and the RSO must be the rank of Staff Sergeant (E-6) and above. Battalion level events require a Field Grade Officer as OIC and RSO to be the rank of Gunnery Sergeant (E-7) or above.



5. The OIC and RSO must be physically present on the range when occupied and actively firing. When Range 15 is used in conjunction with Range 15A (Maneuver and Support by Fire events), only one OIC will be required for both ranges. However, each range must have its own RSO and all 3 must be physically present.
6. Ensure range flags are posted, ear protection is worn (eye protection for steel), other PPE as required, safety brief is given, dedicated safety vehicle and medical support are physically present, Range Control contacted, and all fires are directed between the left and right lateral limit markers (black and white striped) as illustrated in this SOP.
7. Live fire and maneuver no longer closes the MCB-3F and MCB-6D gates. Keys to both gates may be issued to the OIC at checkout upon request for use as an ECP. The gates will be kept closed and manned at all times. Normal traffic will be allowed to flow when it does not conflict with the training and gates will be opened for medevac and RMB personnel and contractors will never be prevented access.
8. Access to Range 15A via MCB-6 is restricted when either Range 10, Range 10A, Range 11, Range 16, or live fire from the MOUT Facility are hot or scheduled to be hot the following morning. Unit OIC's will not be issued the key to the MCB-6D gate in this case. Units must plan to enter Range 15A from the north via Tokyo Rd. If previously issued, the OIC is required to surrender the MCB-6D key upon request.
9. All live fire from Range 15A closes MCB-3 south of Range 15A. Access to Range 15A via MCB-3 south is prohibited.
10. Live fire from Range 15, Range 9, Range 8, Range 8A, and Range 7 also close MCB-3 and possibly Range 15A entirely. Access to Range 15A via MCB-3 south of MCB-6 is prohibited.
11. When Support by Fire position is used, shifting fire to the right (southwest) to the .50cal targets in the Range 15 impact area must occur when maneuver element reaches its first objective on Range 15A. This must be addressed in an approved Scheme of Maneuver (SOM), Comm plan, and Deliberate Risk Assessment (DRA) provided by the unit for the event.
12. The maneuver element must fire in the direction of their movement as indicated in Figure 1 and to their direct front and 5.56mm and below only. Crossfire or firing across the front of the maneuver element is strictly prohibited. Exception to this restriction is when engaging the TMITs in Op-Box 1 or 5. See Figures 5 and 7.
13. Ammunition 7.62mm/7.62mm Special Ball (.308) will only be fired in the principal direction of fire (southeast) as indicated in Figure 1 or parallel to MCB-3. Support by fire position may shift fire (southwest) to the .50cal targets in the Range 15 impact area across MCB-3. Use of 7.62mm by the maneuver element is strictly prohibited.
14. Downrange fire and movement/maneuver is allowed into the tree line between the left and right lateral limit markers with restrictions based on conflicts with Range 8 and 8A (paragraph 19) (See RFMSS). Limit of advance is the dirt trail to the southeast that connects into MCB-3.
15. Inert rocket shots are permitted into the tree line downrange. See Figure 4.
16. Live HE rocket shots are authorized from the single firing position on Range 15A on the single target point in the Range 15 impact area as indicated in Figure 4.

17. 60mm full-range practice mortars will only be fired downrange into the pre-approved target boxes. HE Mortars will be fired from the single approved mortar position across MCB-3 into the Range 15 impact area only. See Figure 2. **ALL mortars will be observed for positive impact. FRP's will be flagged and reported to Range Control. Using units are not authorized to retrieve the expended rounds, they can only be removed by EOD.**

18. Any HE rounds from rocket or mortar fire that fall short of the Range 15 impact area will result in immediate cease fire until the round can be cleared if duded and MCB-3 cleared by MCBQ EOD.

19. Downrange movement on Range 15A must stop at the lateral limit markers and not proceed into the tree line or south on MCB-3 when:

- Range 8 is firing 5.56, 7.62/7.62 Special Ball, .300WM/NM, .50cal, and .338LM/NM.
- Range 8A is firing 5.56 or 7.62/7.62 Special Ball.

20. Range 15A cannot be occupied anywhere south of MCB-6 when:

- Range 9 is scheduled for live fire.
- Range 15 is scheduled for live fire.
- Range 8A is firing SMAW, MAAWS, and AT-4.

21. When Range 10, Range 10A, Range 11, Live fire from the MOUT Facility, or Range 16 are scheduled or hot, MCB-6 will be closed. Access to Range 15A may only be accomplished using Tokyo Rd. to the Northern end of MCB-3 then south. If for any reason OIC/RSO was given the key to the MCB-6D Gate, that key will be recovered by Range Management personnel without incident.

22. All brass, trash, targets and materials will be removed completely at the end of training by the using unit. This includes any materials used to place targets on such as pallets, sandbags, and their debris. Specific attention given to removal of any barbed-wire or C-wire.

23. The parking lot and roll-up containers in the parking lot IVO Range 15A/Range 15/LZ Turkey will be properly policed, nothing left behind.

24. Units that do not occupy their range within two hours of their scheduled occupy time will lose the use of that range for that day.

25. Units that have requested contractor support (automated targets, PITS targets, battlefield effects simulators, etc.) are required to contact a government representative (TECOM Systems Support Officer (SSO) or Fire Desk) if the unit will not be present on the specified range within 1 hour of the approved time in RFMSS.

26. Units that have occupied a range with approved contractor support (PITs, TMITs, battlefield effects simulators, etc.) and that have not begun to use that support within 2 hours of the approved time in RFMSS will forfeit all contracted support for the day.

27. Units that are training with contractor support (PITs, TMITs, battlefield effects simulators, etc.) that place themselves into a voluntary check fire for 2 hours or more during the approved support hours will forfeit remaining support for the day.

NOTE: Units that encounter situations where contractor support (PITs, TMITs, battlefield effects simulators, etc.) is delayed or interrupted by circumstances beyond the control of the requesting unit (RMB directed check fire, ASP support, MEDEVAC, etc.) must contact a government representative (SSO or Fire Desk) in order to arrange continued support within the scope of the contract and available assets.

28. If battle effect simulators are to be used on this range, qualified personnel trained on the systems must be present.

**H. FACILITIES (Number of Each)**

Towers: 0

Sheds: 0

Ammo Breakdown: 0

Porta-Johns: 10 (Shared with Range 15/LZ Turkey)

Parking: Limited to parking lot shared with Range 15.

Description of Other Structures: (5) SACON structures located up range adjacent to MCB-6.

**I. UTILITIES AVAILABLE**

Electricity: None

Lights: None

Water System: None

**J. INSTALLED COMMUNICATIONS.** None

**K. MEASURED DISTANCES**

	<u>MILES</u>	<u>MGRS</u>
TBS	7.0	87106390
ASP	9.0	91256605
Range Control	7.5	87406360
WTBN	7.5	87806740
EMT/Fire (Fire House 3)	9.4	89606410
Main side Gate	11.0	94406440
Camp Upshur	5.0	80007850
Nearest MEDEVAC LZ	0.2	78907150 (LZ Turkey)

**L. Directions to MEDEVAC LZ:** LZ Turkey is located north of Range 15A directly across MCB-6. See Figure 9.

## RANGE 15A MEDEVAC LZ



**Figure-9**

**M. APPLICABLE MAP SHEET.** All grid coordinates listed in this order apply to the Quantico Military Installation Map V834S Edition 2-NIMA 1:25000.

**O. AVAILABLE DAYS/HOURS:** 362 Days. 0500-2359. All other times require waiver.

**P. AREA SUITABILITY:**

<u>Unit Type</u>	<u>Unit Size</u>	<u>Number of Units</u>
Combat Arms	Platoon	1

**Q. GEOGRAPHICAL DATA**

Access Routes:	MCB-3, MCB 6, and Tokyo Rd.
Soil Type:	Dirt
Terrain Type:	Level
Vegetation:	Grass/Woodland

**R. COMMUNICATION REQUIREMENTS:**

1. A radio check is required immediately upon occupying any portion of the RTA, every 30 minutes at top/bottom of the hour in a live fire status and every 3 hours top of the hour in a non-live fire status.
2. The Range Control Facility (RCF) Fire Desk Safety Net call sign is "Range Control". Your call sign is **"RANGE 15 Alpha"**.
3. The Primary means of communication with the RCF (Fire Desk) on the Safety Net is via the ELMR Radio provided to OIC/RSO at time of check out on the talk group "RC Safety" (ground) and 134.1 VHF (air).

4. The Secondary means of communication with the RCF (Fire Desk) on the Safety Net is via the OIC/RSO Cell Phone to: 703-784-5321 or 5322. Cell phone number is verified at time of occupation.
5. OIC/RSO at all times will always monitor the RCF Primary and Secondary Safety Nets. Instant communication is required.
6. Any unit with organic ELMR radios will have the "RC Safety" talk group programed in and use those radios as their primary means of communication within the RTA.
7. Units without organic ELMR assets will be issued ELMR radios from RMB upon check-in.
8. Approved Non-ELMR radios are only authorized for internal communication (ground).
9. If the RCF cannot reach a unit within the RTA via primary communication, the unit will be contacted via the secondary means of communication.
10. Upon loss of primary communication the OIC/RSO will initiate a "check fire"/cease training status and will contact the RCF via secondary communication. This communication will be maintained while primary communication is being restored. Units may only resume firing/training once primary communication has been re-established and clearance is granted by the RCF.

#### **S. INJURY CLASSIFICATIONS:**

Injuries are classified into the following categories to aid in casualty evacuation from the RTA.

1. **ROUTINE**. Routine injuries are those injuries that are not threatening to life, limb or eyesight, and conditions or illnesses treatable by medication or procedures available at the base medical facilities.
2. **PRIORITY**. Priority injuries are those injuries that require immediate medical attention but are not threatening to life, limb, or eyesight if treated promptly.
3. **URGENT**. Urgent injuries are severe injuries that are threatening to life, limb, or eyesight and require immediate medical attention.
4. **MASS CASUALTY**. A mass casualty is a series of injuries with multiple priority and urgent medical patients.

#### **T. MEDICAL EVACUATION (MEDEVAC) PROCEDURES:**

1. Injury occurs.
2. Range will immediately cease fire.
3. Medical support evaluates/treats injured personnel.
4. Range OIC/RSO notifies the RCF of the injury, is the victim conscious/unconscious and what type of MEDEVAC transportation is requested (ground/air).
5. The OIC/RSO must maintain constant radio contact with Range Control and awaits further instructions.

*Martin W. Dankanich*

**INSTALLATION RANGE SAFETY OFFICER**

**DATE: 4 Aug 2023**